

Prime Minister Boris Johnson announces that cinemas and museums are to reopen in the United Kingdom on the 4th July 2020, having overseen the largest withdrawal of public funding for the arts in 30 years.

Research Questions:

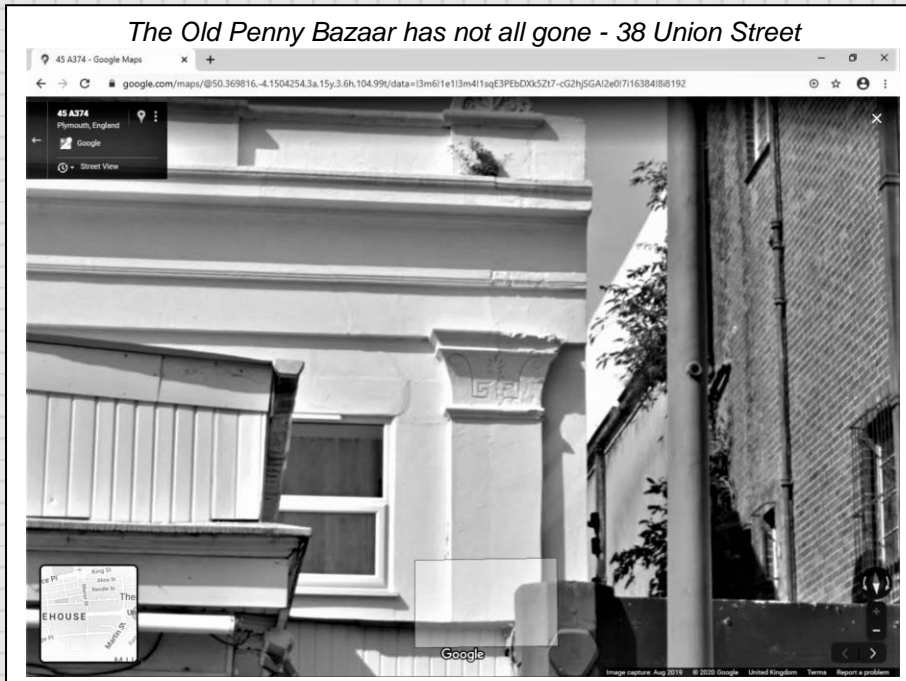
- Which visual signs from Joan's diagram point to sonic passages?

Notes and observations:

Dream: unusually for me, I didn't have a ticket on the train / tram thing, so had to pay full fare plus fine. It was because I got to the station at 11.52, and the train was due at 11.55, only just made it. It was about 14 shillings, and the fine was 7 pounds, which was a lot of money.

Notes and observations:

Round the back of the current cinema, in Flora Street, traces of Joan's house can be seen, although in a radically transformed manner.



1. Tesla Coils in Action
2. Smoke Rises in Curls (from the *Gentleman's Doobie*)
3. Tattooed Faces in Museum Cases
4. Beeswax Corridors
5. Contrails Over Cattedown (Air Raid)
6. Ribbons and Bows (Squid Neurones)
7. Cinematic Convection of a Boiling Liquid in a Kettle
8. Busby Fucking Berkeley (Hoe Carousel)
9. Ovulation Interference in Public Speaking
10. No.38 Union Street Column Motif (*Psychic Masonry Imprint*)

Sonic considerations:

Take guidance from your usual resources over how parallel tutor texts can help to unlock or inform aural considerations from visual analysis: e.g. Axel, E.S and Levent, N.S. (2002) *Art Beyond Sight: a resource guide to art, creativity, and visual impairment*. 1 ed. New York, N.Y. : Art Education for the Blind: AFB Press

Links: Kaleidoscopic dance (1933)

<https://www.youtube.com/watch?v=ySVQ5MaUbd8>